

BACKGROUND

This site, which extends to approximately 4 hectares, had a history of quarrying which dated from around the mid 1800's. In more recent years it had been backfilled with a variety of waste materials including paper, ash and demolition wastes. It also adjoined a large municipal landfill site, which had over spilled into the subject site.

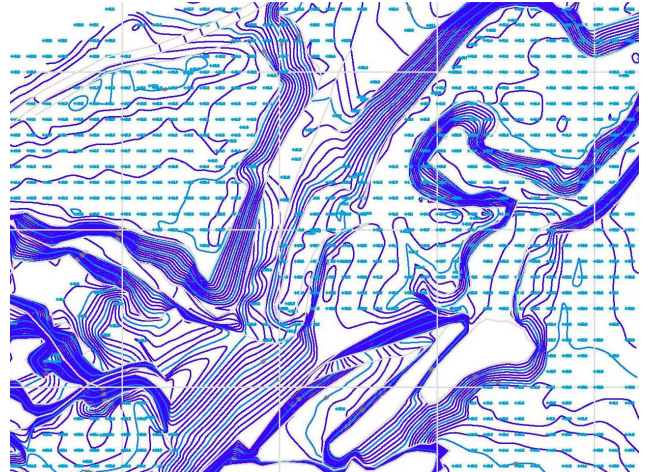
The Client required a Geotechnical Site Appraisal to be undertaken to assess the feasibility of future residential development.



ASSESSMENT & SITE WORKS

A detailed soil model was developed using CAD and GIS techniques, through review of previous ground investigation reports, historical Ordnance Survey mapping, stereoscopic pairs of historic aerial photos. Photo-control was established to capture data for each year of photos and create photogrammetric contour drawings providing a valuable "snap shot" as to the extent of quarry workings at that particular time. The contour drawings were then compared with available ground investigation data, allowing a supplementary investigation to be designed to establish the base level of the former quarry and characterise the various materials present across the site.

The ground investigation works included 64 No trial holes to depths from 2.5 to 7.6m; 15 No cable percussion boreholes with rotary follow on to depths ranging from 13 to 40m; together with the installation of land gas and groundwater monitoring wells. Additionally site reclamation screening trials were undertaken to allow the volumes of recoverable materials to be estimated.



REMEDIAL DESIGN

Southern Testing provided a Geotechnical Appraisal Report summarising field and laboratory test results and including preliminary geotechnical design proposals and recommendations.



ISO 9001
ISO 14001
BS18001

